



Carhartt® Rain Defender® Paxton Heavyweight Hooded Sweatshirt. CT100615



A heavyweight version of the classic hooded sweatshirt, this heavy-duty hoodie stands up to outdoor work in a substantial, water-repellent cotton blend.

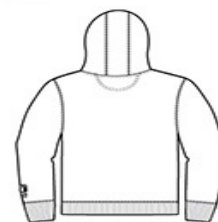
- 13-ounce, 75/25 cotton/poly blend with Rain Defender durable water-repellent finish
- 55/45 cotton/poly blend (Carbon Heather)
- Attached jersey-lined three-piece hood with drawcord closure
- Front hand warmer pocket with hidden security pocket inside
- Stretchable, spandex-reinforced, rib knit cuffs and waistband
- Carhartt label sewn on hand warmer pocket
- Original fit/Loose fit

CARE INSTRUCTIONS

Machine wash cold with like colors, Do not bleach, Tumble dry low remove promptly.

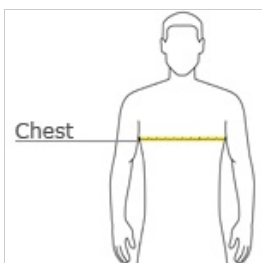


front



back

HOW TO MEASURE



CHEST WIDTH

Measure under the arm and around the fullest part of the chest with arms down, keeping tape horizontal.

SIZE CHART

	S	M	L	XL	2XL	3XL	4XL
Chest	34-36	38-40	42-44	46-48	50-52	54-56	58-60

COLOR INFORMATION



Black



Carbon Heather
PMS 7540C



New Navy
PMS 533C