



Nike Dry Raglan Polo NKBV6047



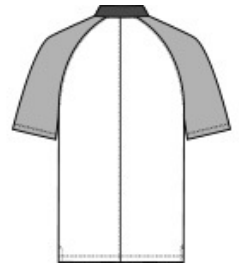
With bold contrasting collar and sleeves, this polo boasts raglan sleeves for easier movement and Dri-FIT moisture management technology to help keep you cooler and drier. Design features include a flat knit collar, two-button placket with dyed-to-match buttons, open hem sleeves, side vents and a back seaming detail. A contrast Swoosh design trademark is embroidered on the left sleeve. Made of 3.9-ounce, 100% polyester Dri-FIT fabric.

CARE INSTRUCTIONS

Care instructions. Machine wash cold (30c). Wash inside out; wash with like colors, do not use softeners, do not use bleach, tumble dry low, do not iron, do not dry clean.

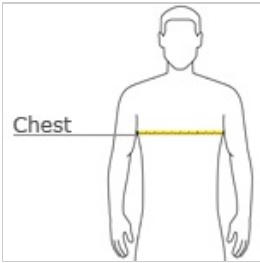


front



back

HOW TO MEASURE



CHEST WIDTH

Measure under the arm and around the fullest part of the chest with arms down, keeping tape horizontal.

SIZE CHART

	XS	S	M	L	XL	2XL	3XL	4XL
Chest	32-35	35-37 1/2	37 1/2 -41	41-44	44-48 1/2	48 1/2 -53 1/2	53 1/2 - 58	58-63

COLOR INFORMATION



Black/
Anthracite
PMS PROCESS
BLACK C



Game Royal/
Midnight Navy
PMS 661C



Gym Red/ Team
Red
PMS 187C



White/ Cool
Grey
PMS WHITE