

Red House® Ladies Pinpoint Oxford Non-Iron Shirt. RH250



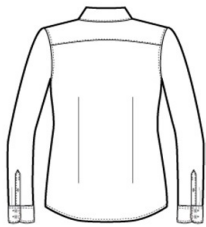
Crafted from 3.8-ounce, 100% cotton, this elegant pinpoint oxford has a wrinkle-resistant finish so you always look your best, no iron required. Details like pucker-free taped seams, rounded adjustable cuffs, RH engraved buttons and a shirttail hem complement the sharp look. Open collar and neckline. Front and back darts.

CARE INSTRUCTIONS

Machine wash warm with like colors, only non-chlorine bleach if needed, tumble dry low, remove promptly & hang, warm iron if needed.

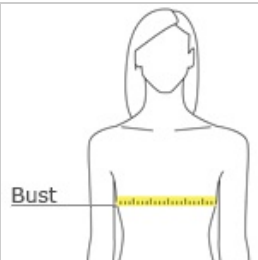


front



back

HOW TO MEASURE



BUST
Measure under the arm and around the fullest part of the bust with arms down, keeping tape horizontal.

SIZE CHART

	XS	S	M	L	XL	XXL	3XL	4XL
Size	2	4/6	8/10	12/14	16/18	20/22	24/26	28/30
Bust	32-34	35-36	37-38	39-41	42-44	45-47	48-51	52-55

COLOR INFORMATION



Blue
PMS 2134C



Charcoal
PMS COOL GREY 11C



Vintage Navy
PMS 2374C



White
PMS WHITE