

## Red House® Tall Nailhead Non-Iron Shirt. TLRH370



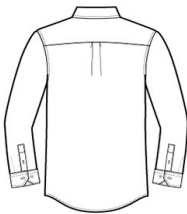
Thoroughly updated, this crisp nailhead shirt has a silky feel and a wrinkle-resistant finish for exceptional non-iron performance. 4-ounce, 60/40 cotton/polyester with pucker-free taped seams and RH engraved buttons to elevate the office-ready look. Button-down collar, left chest pocket, back box pleat and mitered adjustable cuffs.

### CARE INSTRUCTIONS

Machine wash cold with like colors, only non-chlorine bleach when needed, tumble dry low, warm iron if needed.

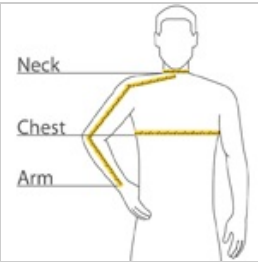


front



back

### HOW TO MEASURE



#### CHEST WIDTH

Measure under the arm and around the fullest part of the chest with arms down, keeping tape horizontal.

#### NECK

Measure around the fullest part of the neck at the base.

#### ARM

Place hand on hip. Start at the center of the back of the neck and measure across the shoulder, to the elbow, and then down to the wrist.

### SIZE CHART

	LT	XLT	2XLT	3XLT	4XLT
Chest	41-43	44-46	47-49	50-53	54-57
Neck	18	19	19 3/4	20 1/2	21 1/4
Arm	36 1/2	38	39	40	41
Pocket Height	5 1/4	5 1/4	5 1/4	5 1/4	5 1/2
Pocket Width	4 5/8	4 5/8	4 5/8	4 5/8	4 7/8

### COLOR INFORMATION



Black  
PMS NTR BLACK  
C



Mediterranean Blue Navy  
PMS 7687C



White  
PMS 2139C



White  
PMS WHITE